



GO&UP AUTOMATION

Headquarter

Add: 140 Golf Road, Yinhu Street, Fuyang District,
Hangzhou City, Zhejiang Province China

TEL: 86-0571-88396510

Turin Distributor

Add: Via Sondrio 13-10144都灵

Tel: +393356255846

Toronto Distributor

Add: 1215 Nicholson Road, Newmarket, Ontario

Tel: 19058957679

Rayong Distributor

Add: 7/668 Moo.6 T.mabyangporn A.Pluakdang rayong 21140

Website: www.goupauto.com Email: info@goupauto.com Whatsapp: +86-188888759966



Details provided about the properties and usability of the products are purely for information purposes and do not constitute a guarantee of these characteristics. The extent of goods delivered is determined by the subject matter of the specific contract. No liability accepted for errors or omissions. Subject to technical alterations.

© 2017 Hangzhou Gaopin Automation Equipment Co.,Ltd



Assembly automation and function test system



Automotive



Flexibility\Efficiency\Precision



Overview

GO&UP Automation is a leading company in factory-wide automation, including assembly automation, function testing , MES(software) and Resistance spot welding.

We provide cost effective solutions to a variety of factory automation challenges including quality, productivity, and safety , while embracing wide-ranging innovative and maintaining the high standard of quality.

Our team solve customers' problems and effective project work in a spirit of partnership.

500 _ Cases

136 _ Patents

7 _ branches

400+ _ employees

37000m²+ _ factory&office area



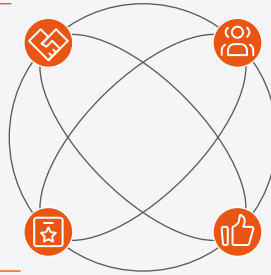
Customers



Capabilities

Design Capability

- * 220+ design engineers
- * 15-20 years core global technical team
- * China Best Employer Nomination
- * Secret design room for protecting technical security



Quick Delivery

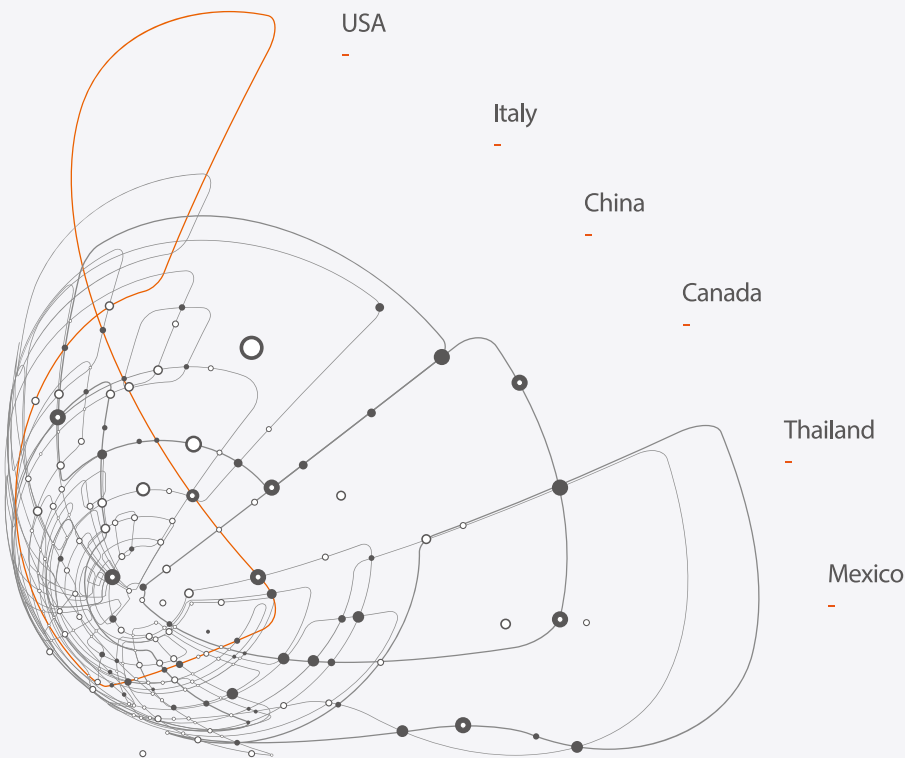
- * 29000m2 production area
- * 110+ qualified mechanic & electrician
- * Global supply chain management

Project Management

- * PMP certification for project managers
- * Exclusive project manager follow up each project
- * 22 project managers from automotive, robotics industries.

Quality Assurance

- * ISO9001 quality management system
- * 6s on site management
- * Quality assurance team with transnational Ecorporation work experience
- * FMEA failure mode and effect analysis process.



We focus On Automotive parts Assembly & test

Go&Up Automation always provide you a tailor made assembly and test system – to find the ideal match between your products and the assembly process.

With the rich experience in the following wide range of process technologies, Go&Up Automation work with you to support your goals.



CRAFT REALITY



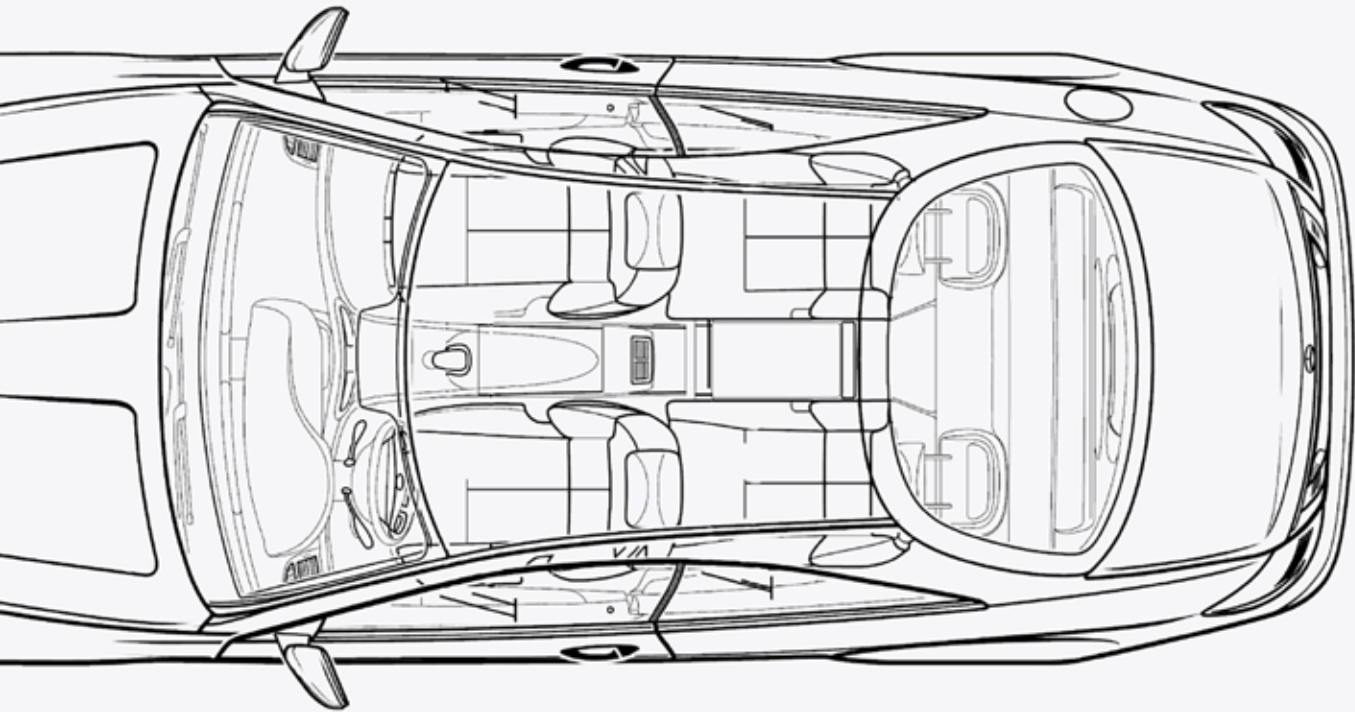
CRAFT REALITY



CRAFT REALITY

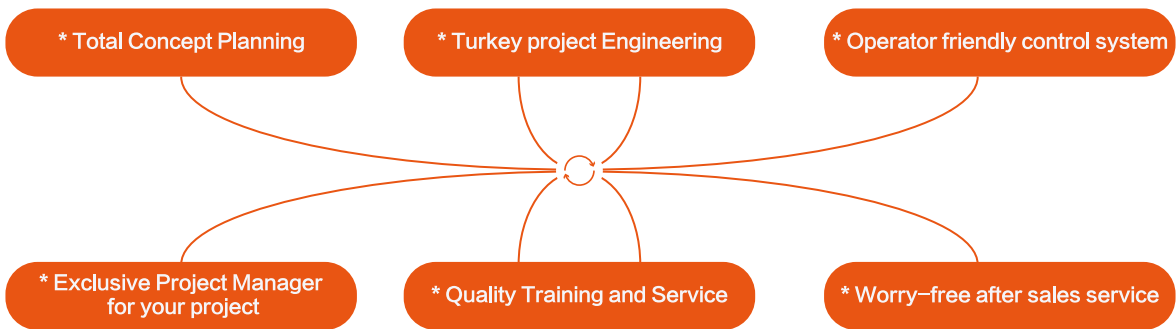


HANDLING	PRESSING / JOINING	PART CONVEYING	MARKING
<ul style="list-style-type: none"> • Wire Handling • Tube Handling • Mold Inserting • Pin Insertion • O Ring Installation • Pick and Place 	<ul style="list-style-type: none"> • Pressing • Riveting • Staking • Screw Driving • Punching • Bending • Crimping • Ball Press • Orbit Forming • Adhesive Applicator 	<ul style="list-style-type: none"> • Pallet • Rotary Dial • Cam Driven Indexer • Linear motor palle transfer • Puck 	<ul style="list-style-type: none"> • Laser • Stamping • Impact • Label Printing



DISPENSING & METERING	WELDING & SOLDERING	CALIBRATION	TESTING
<ul style="list-style-type: none">• Fluid and Powder• Grease• Adhesive	<ul style="list-style-type: none">• Laser Welding and Cutting• Ultrasonic Welding• Resistance Welding• Heat Staking• Soldering• Solvent Bonding	<ul style="list-style-type: none">• Pressing, Driving and Setting to Distance (Dimensional)• Fluid Flow (Wet and Dry)• Mechanical/Electrical Outputs (Chips, Switches)	<ul style="list-style-type: none">• Leak & Flow Testing• Electrical Testing• Functional Testing• Hydraulic Testing• Inspection

From concept to running system



Powertrain system

Automotive new energy powertrain

- 3in1 Electrical drive unit
- Drive Motor
- Drive Motor Stator
- Drive Motor Controller
- Disc/Hub Motors
- Battery Management System (BMS)
- Hybrid Engine VVT
- IGBT modules



Automation equipment for the automotive industry



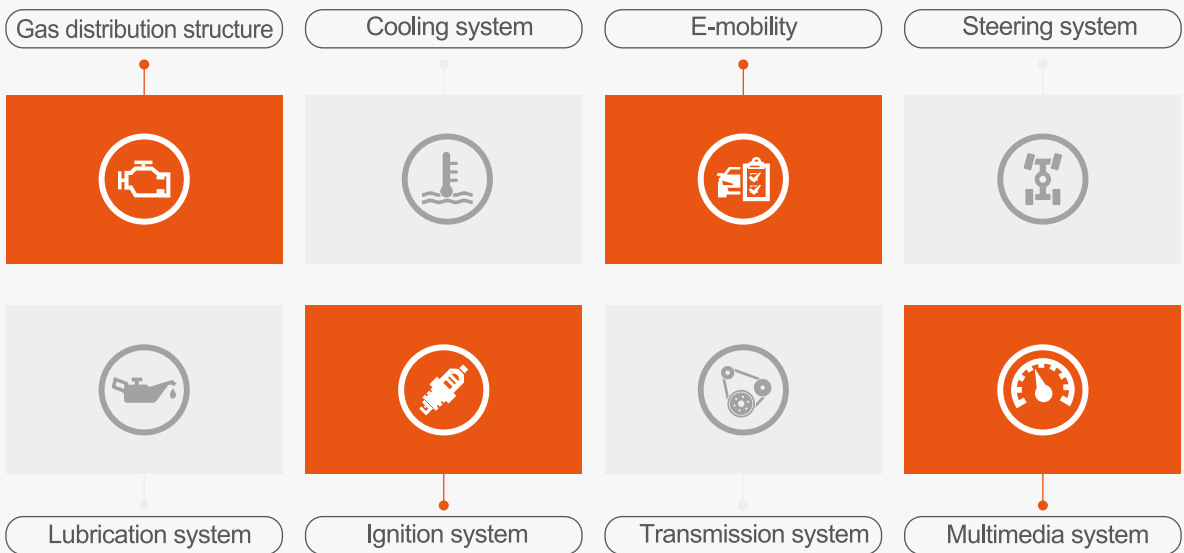
Chassis wire control system

- ABS Valve
- EPS C/DP/R
- E-Booster 1box/2 box
- Brake
- Differential
- Electronic Vacuum Pump
- CDC suspension
- CDC internal valve/external valve
- Air Suspension
- Air Pump

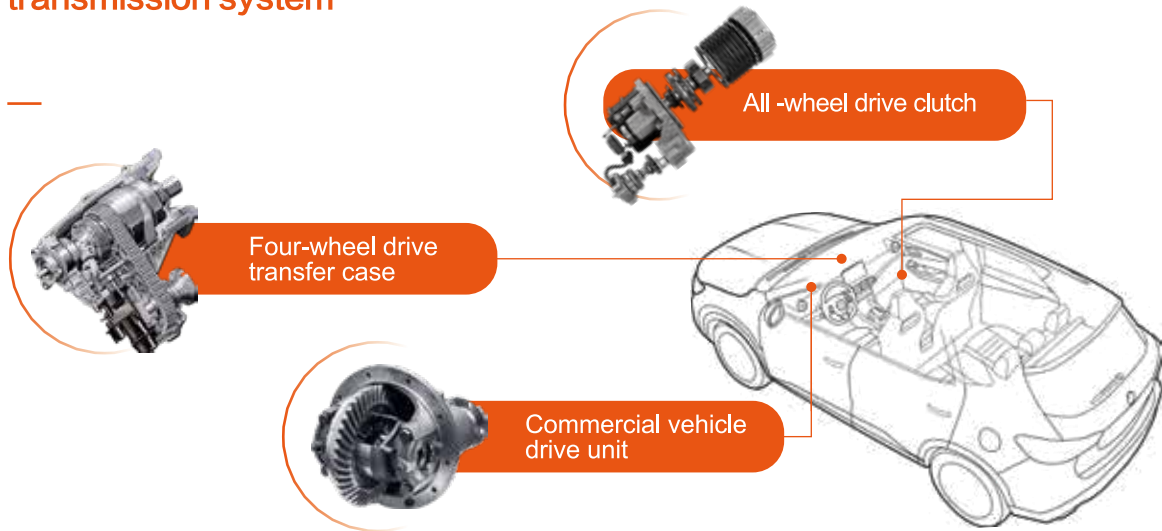
Sensing and executing motors

- Wiper Motor
- Window motor/sunroof motor
- Cooling fan motor/DC brushless motor
- EPS motor
- Car anti-freeze door actuator
- Shift Actuator

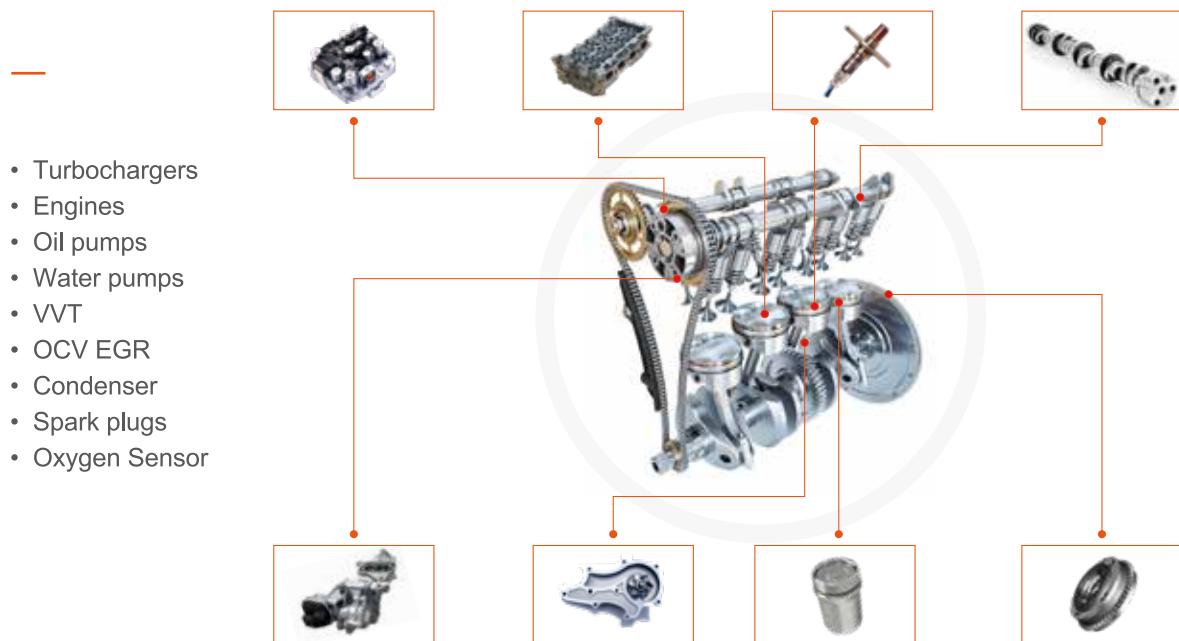
Internal combustion engine power plant



Internal combustion engine transmission system



Internal combustion engine powertrain accessories



Thermal management system

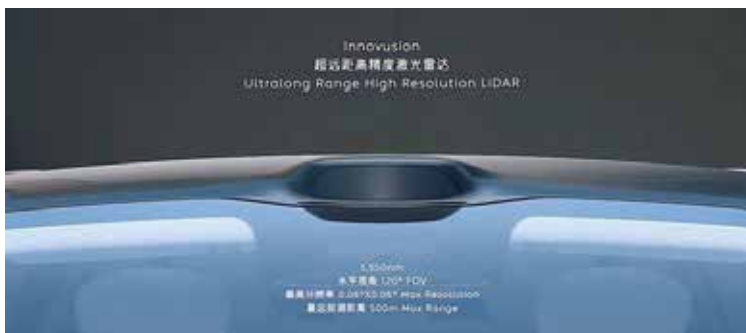
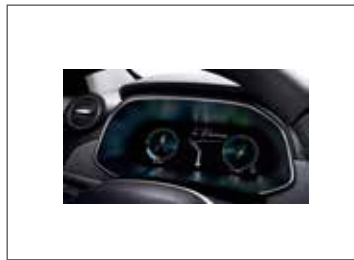
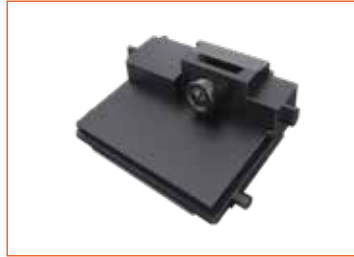


Automation equipment for the automotive industry

- Automotive air conditioning assembly
- Vortex type electric compressor
- Electronic water pump 60W/400W
- Electronic oil pump
- Air conditioner fan motor
- ERV valve
- ERV valve
- Chiller
- Thermal Management Integrated Unit
- Battery cooling plate
- Cooling Fan Motor / Cooling Fan Assembly
- Cooler/Radiator
- PTC Heater



Vehicle interior and ADAS automotive industry



- multimedia
- in-vehicle camera
- antenna
- LIDAR
- millimeter-wave radar
- power sunroof

Function Test System

Full test functionality
– from visual inspection to NVH testing



76 sets EOL testing benches and
54 sets durability/performance test benches supplied

Valve performance test Durability test

- EGR valve performance test
- EGR valve calibration test
- ABS valve performance test
- Solenoid valve performance test

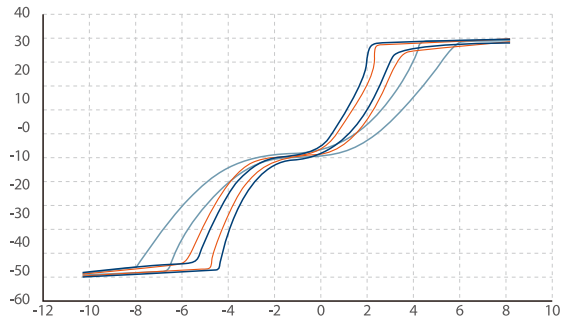
Pump performance test Durability test

- Oil pump performance test
- Oil pump durability test
- Vacuum pump performance test

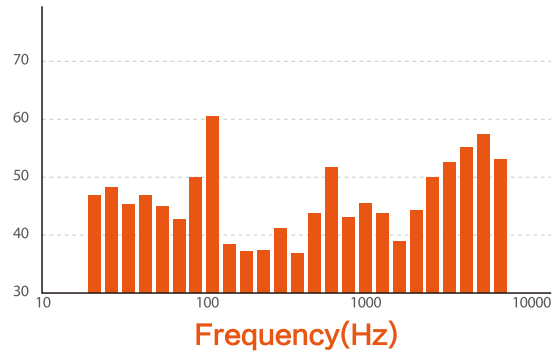
Electronic oil pump EOL measurement

- Electronic vacuum pump EOL test
- Oil pump EOL test
- OCV valve EOL test
- VCT phaser EOL test
- EOL test bench for electric compressor
- Thermal management integrated valve
- EOL test bench

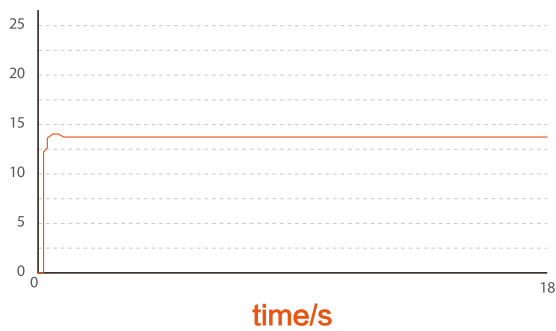
Torque-speed test



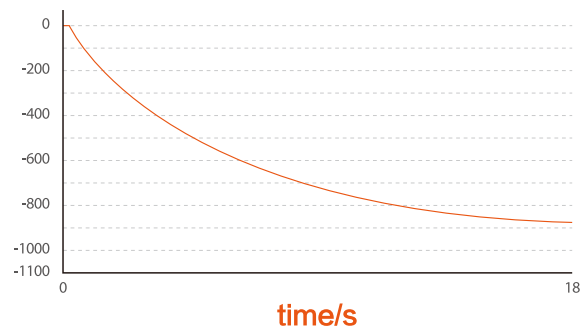
Noise/dB



Pressure/mbr



vacuum degree/mbr



Assembly

- EPS performance test
- Turbocharger cold test machine
- Caliper performance test
- E-booster performance test

Automotive electronics

- Dashboard EOL testing
- Instrument panel calibration test
- ECU calibration

AOI

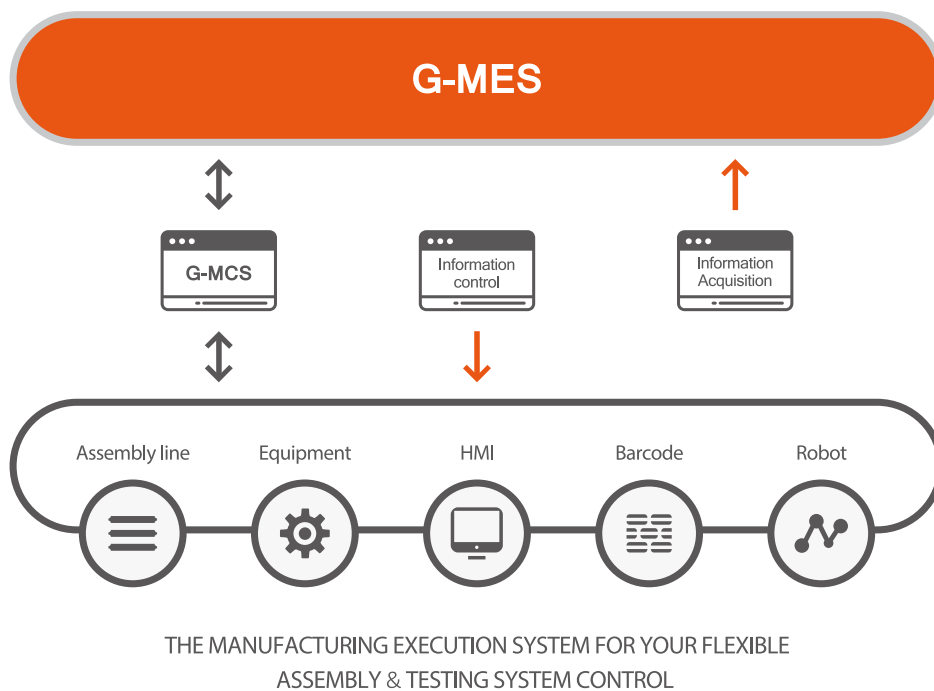
- Dashboard function test
- Vacuum pump blade test
- OCV valve solder joint test

Motor electronic control

- Dc brushless motor EOL test
- Dc brush motor EOL test
- Motor CNI online test
- Voltage back potential test of insulation
- Drive motor EOL test
- EOL test of motor controller

MES

The MES is a manufacturing execution system for the flexible control of assembly and testing system. With 12 function modules and our software framework, we offer you a highly scalable MES solution to acquire machines data and trace production process for whole process control and monitoring.

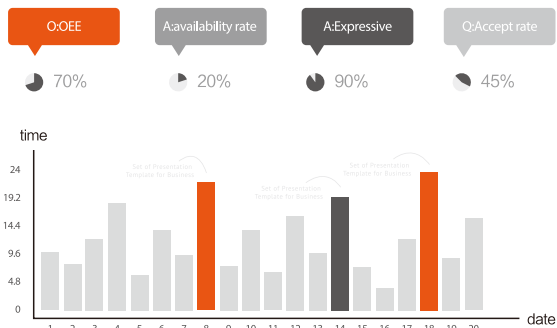


12 Function Modules

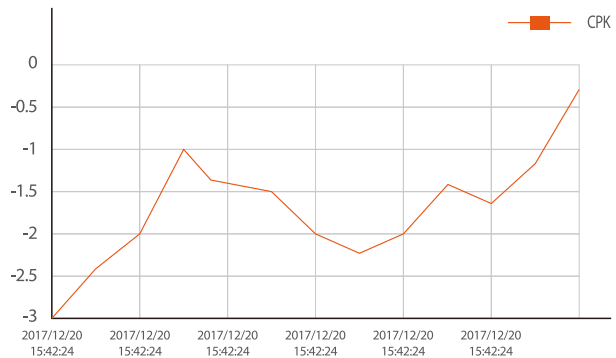
- User Administration
- Monitoring/Tracking
- Order Planning
- Trends/Reporting
- Long-range Maintenance
- Intelligent Analysis
- Visualization System
- Process Control
- Data Acquisition
- Alarm Statistics
- Work Plan Management
- Machine Management

FACTORY-WIDE AND QUALITY ASSURANCE IN PRODUCTION PROCESSES
WITH Go&UP HIGHLY SCALABLE MES.

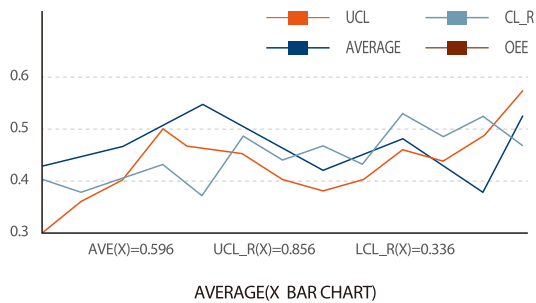
Equipment analysis



CPK Trend chart



SPC



Month's order

